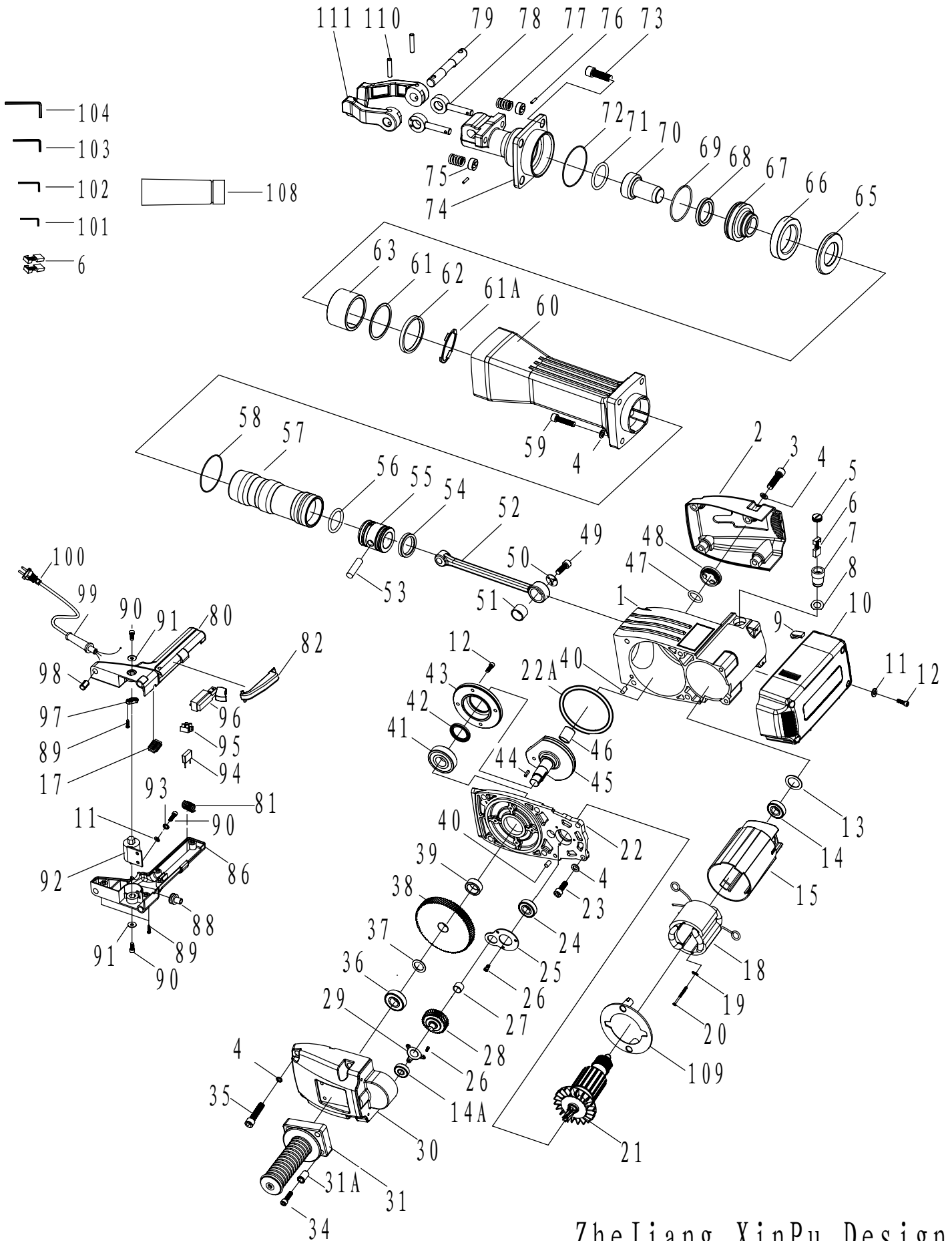


XP-G90B Hammer Part Chart



ZheJiang XinPu Designed

XP-G90B Hammer Parts List

XP-No	Item No.	Part Describe	Quantity	XP-No	Item No.	Part Describe	Quantity
88290060	1	Housing Ass'y	1	88234005	51	Needle Bearing NK2220	1
88290025	2	Tail Cover	1	88272003	52	Connecting Rod Ass'y	1
88210023	3	Hex. Socket Bolt M10x35	4	88222017	53	Piston Pin	1
88210060	4	Φ10 Flat Washer	14	88262009	54	Y Type Sealing Ring Φ45.7xΦ55.2x7	1
88241002	5	Brush Cap	2	88290028	55	Piston	1
88241003	6	Carbon Brush	2	88262010	56	Fluorin O Ring Φ46xΦ5.3	1
88242005	7	Brush Holder	2	88272011	57	Cylinder	1
88241010	8	Insulate Washer	2	88262011	58	O Ring Φ82xΦ2	1
88262002	9	Cap Rubber	2	88210025	59	Hex. Socket Bolt M10x45 (12.9)	4
88262036	10	Fan Cover	1	88290026	60	Aluminum Head	1
88210057	11	Φ6xΦ10.5 Flat Washer	6	88222007	61	Mouth Washer	1
88210007	12	Hex. Socket Bolt M6x20	8	88222006	61A	Protecting Support For Urethane Ring	1
88210063	13	Φ32 Urethane Washer	1	88262012	62	Big Urethane Ring	1
88232004	14	Ball Bearing 6201 2RS/C3	1	88272010	63	Mouth	1
88232003	14A	Ball Bearing 6201 RZ/C2	1	88272009	65	locking Ring	1
88262034	15	Stator Ass'y	1	88262014	66	Small Urethane Ring	1
88242004	17	Electricity Feels 0.18μH	1	88272007	67	Shank Sleeve	1
88280107	18	Stator 220-240V	1	88262015	68	Y Type Sealing Ring Φ46.2XΦ33X6	1
88280059	18	Stator 100V	1	88262016	69	O Ring Φ78xΦ3	1
88280033	18	Stator 110-120V	1	88272008	70	Impact Hammer	1
88210090	19	Φ5 Flat Washer	2	88262017	71	Fluorin O RingΦ55xΦ5.3	1
88210163	20	Tapping Screw ST4.8x85	2	88262018	72	O Ring Φ90xΦ2	1
88280108	21	Armature 220V-240V	1	88210027	73	Hex. Socket Bolt M14x40 (12.9)	4
88280060	21	Armature 100V	1	88272027	74	Front Cover	1
88280034	21	Armature 110-120V	1	88272026	75	Pull ring	2
88290064	22	Inner Cover	1	88221018	76	Needle Roller	2
88262001	22A	O Ring Φ143xΦ2	1	88222032	77	Pull rod spring	2
88210022	23	Hex. Socket Bolt M10x30	2	88272023	78	Pull rod	2
88237010	24	Ball Bearing 6203 DD C3	1	88272024	79	Locking Lever	1
88222002	25	Bearing Hold Down Plate	1	88262041	80	Main Handle Cover	1
88210002	26	Hex. Socket Bolt M5x12 (12.9)	6	88222031	81	Trigger spring	1
88234006	27	Needle Bearing BK1312	1	88262042	82	Switch Trigger	1
88272006	28	Counter Gear	1	88262040	86	Main Handle	1
88222004	29	6201 2RS C3 Bearing Cover	1	88262022	88	Wire Cover	1
88290024	30	Gear Cover	1	88210038	89	Tapping Screw ST4.2x18	6
88262030	31	Side Handle	1	88210006	90	Hex. Socket Bolt M6x15	4
88222023	31A	Side Handle Steel Bushing	4	88210058	91	Φ6xΦ18 Flat Washer	2
88210017	34	Hex. Socket Bolt M8x30	4	88262026	92	Handle Support	1
88210026	35	Hex. Socket Bolt M10x55	4	88210052	93	Φ6 Spring Washer	2
88237016	36	Ball Bearing 6204 VV	1	88241005	94	Electric Capacity 0.33uF	1
88222001	37	Big Gear Partition Washer	1	88210076	95	Rivet	2
88272005	38	Final Gear	1	88242006	96	Switch	1
88222003	39	Distance Ring	1	88261010	97	Cord Clip	1
88222015	40	Pin Φ8x14	2	88262023	98	Spring Pole	4
88232008	41	Ball Bearing 6305 RS	1	88261016	99	Cord Armor	1
88262006	42	Oil Seal Ring Φ34xΦ48x5	1	88250000	100	Cord	1
88290027	43	Bearing Cover	1	88301003	101	5mm Hex.Bar Wrench	1
88222016	44	Palt Key 4x18	2	88301004	102	6mm Hex.Bar Wrench	1
88272002	45	Crank Shaft	1	88301005	103	8mm Hex.Bar Wrench	1
88222018	46	Crank Shaft Ring	1	88301006	104	12mm Hex.Bar Wrench	1
88262007	47	O Ring Φ37xΦ2	1	88304020	108	Oil Bottle	1
88262008	48	Oil Tank Cover	1	88262035	109	Fan Guide	1
88210024	49	Hex. Socket Bolt M10x1.25x35	1	88210194	110	Spring Column Pin	2
88222005	50	Crank Washer	1	88272025	111	Chisel Chuck	1