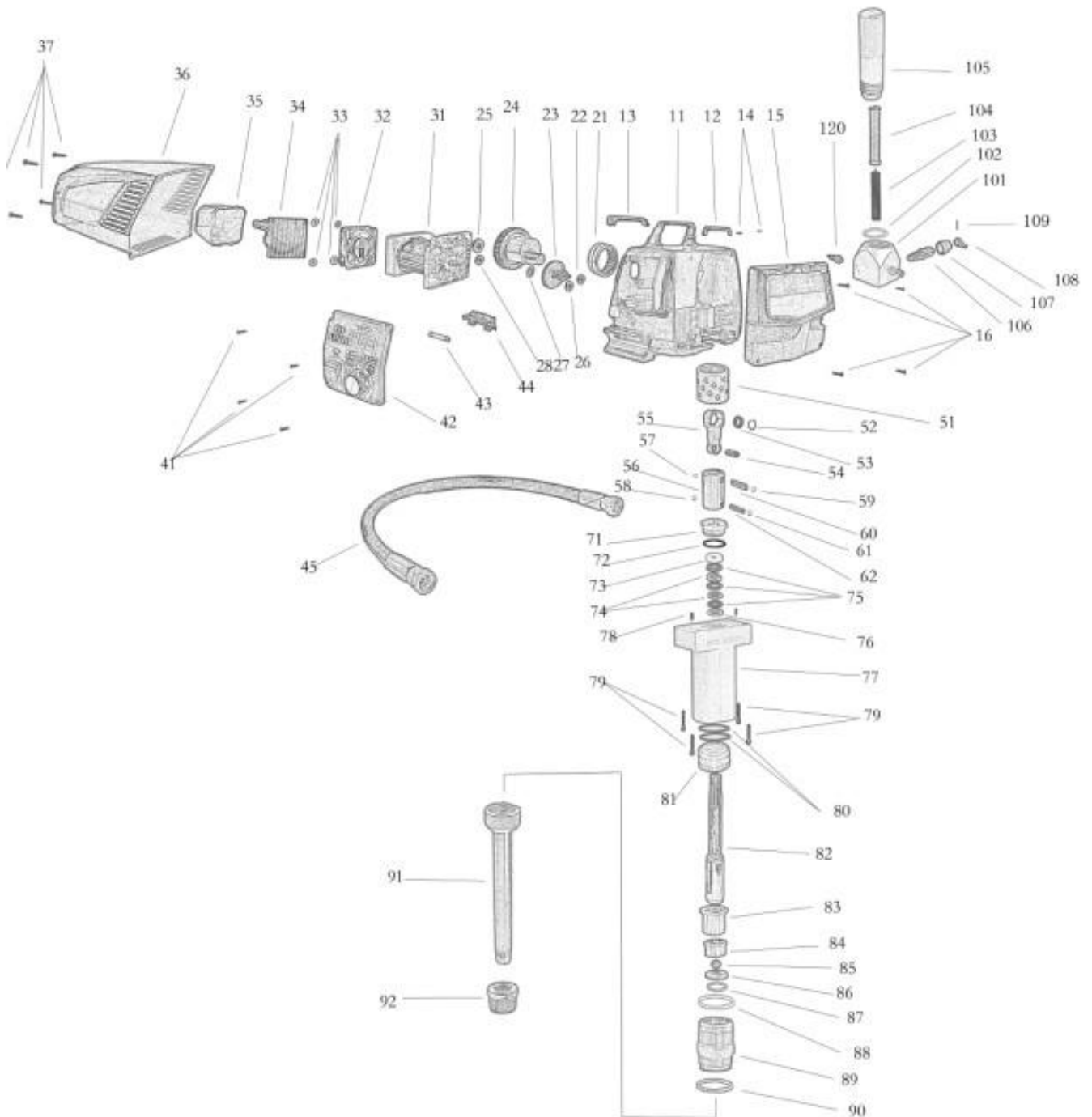


Schema explodata PAZ 6336ib



Part No.	Description	Part No.	Description
11	Gear box housing	12	Handle (front)
13	Handle (back)	14	Screw for handle
15	Front cover	16	Screw for front cover
21	Crankshaft bearing NK50/25	22	Bearing 6201
23	Middle gear	24	Crankshaft
25	Bearing 6204	26	Bearing 6201
27	Gasket	28	Bearing 6201
31	Motor	32	Fan
33	Gasket	34	Actuator
35	Actuator cover	36	Motor cover
37	Screw for motor cover	41	Screw for control board
42	Control board	43	Fuse
44	Fuse holder	45	Connecting hose
51	Graphite cooper sleeve	52	Clamp spring
53	Bearing NK22/20	54	Graphite cooper sleeve
55	Connecting rod	56	Piston
57	Clamp spring	58	Clamp spring
59	Clamp spring	60	Shaft pin
61	Clamp spring	62	Round pin
71	Cooper cap	72	O-ring
73	Spacer	74	Upper v-packing
75	Lower v-packing	76	Upper v-packing supper seat
77	Pump body	78	Guide pin
79	Screw	80	Lower packing O-ring
81	Lower seal	82	Piston rod
83	Cooper sleeve	84	Ball cage
85	Outlet valve ball	86	Outlet valve seat
87	Outlet valve seal	88	Back-up ring
89	Down body	90	Seal for suction tube
91	Suction hose	92	Suction filter
101	Pump filter seat	102	O-ring
103	Pump filter spring	104	Pump filter
105	Filter housing	106	Prime/spray valve
107	Embossments	108	Lever
109	Round pin	120	Pressure sensor