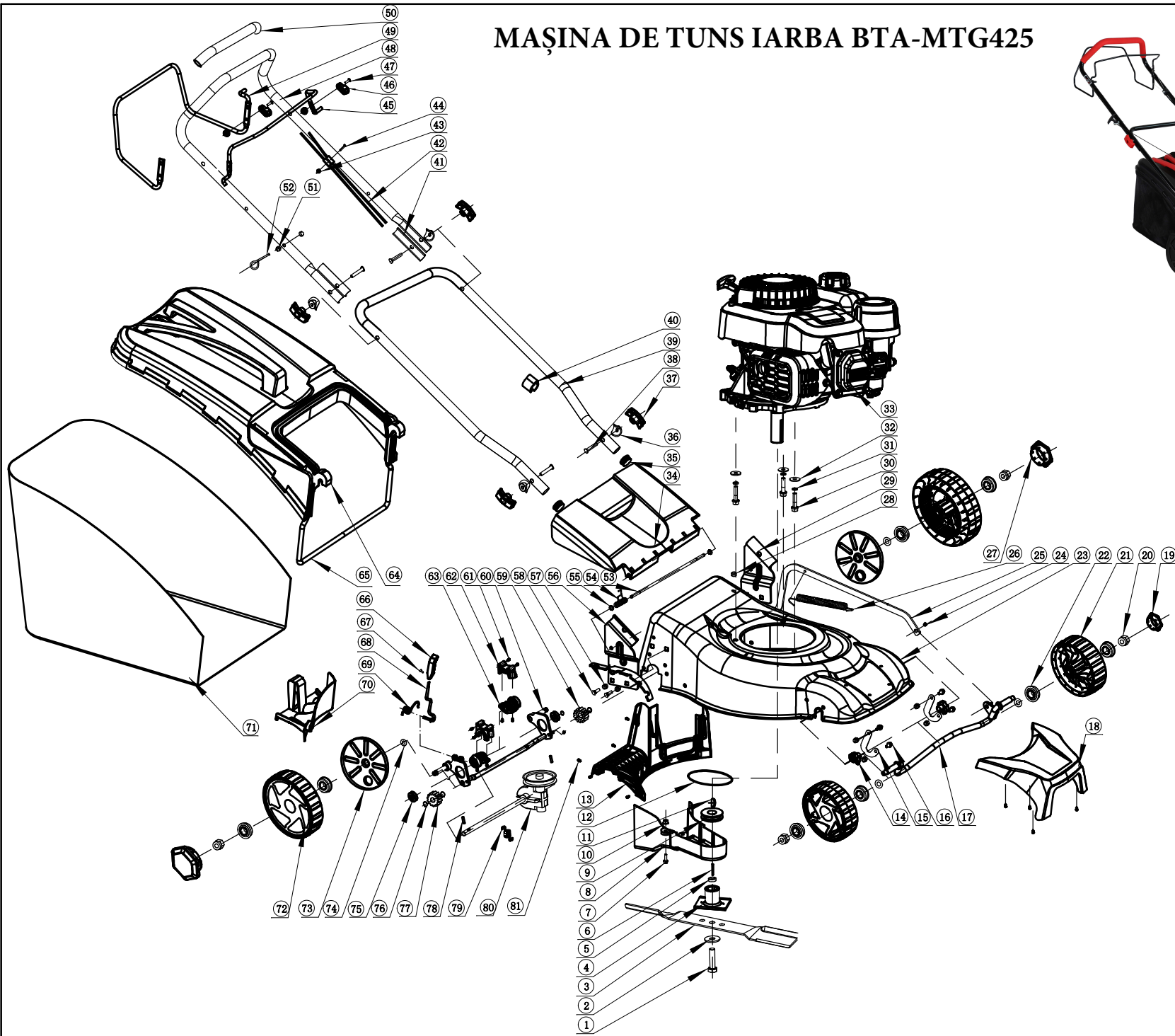


# MAȘINA DE TUNS IARBA BTA-MTG425



**MAȘINA DE TUNS IARBA BTA-MTG425**

<b>NO.</b>	<b>CODE</b>	<b>part name</b>	<b>QTY</b>	<b>NOTE</b>
1	55001-E10G-040C	Hexagon head bolt	1	
2	55012-LA17-0100	Dish washer	1	
3	71100-LA17-00B6	Blade	1	
4	64010-LA17-0200	Blade adapter	1	
5	54104-LA17-0100	Blade washer	1	
6	13301-LA20-0500	Flat key	1	
7	B5789-06KG-018F	Hexagon flange bolts	2	
8	73005-LA17-00B5	Belt cover	1	
9	72010-LA17-0100	Initiative pulley	1	
10	B6183-0600-000F	Hexagon flange nuts with non-metallic insert	6	
11	13304-V65F-0000	Half round key	1	
12	72003-LA17-0000	Belt	1	
13	63001-LA17-03B5	Plastic air path	1	
14	51380-LA17-04B5	Front wheel axis cab	2	
15	51202-LA17-0400	Front wheel axis board	2	
16	B5789-06KG-014F	Hexagon flange bolts	8	
17	51301-LA17-05B5	Front wheel axis assembly	1	
18	11016-LA17-00B5	Front mask	1	
19	51311-LA17-03RP	Wheel cover	2	
20	B6182-1000-000F	Hexagon nuts with non-metallic insert	4	
21	51310-LA17-07B5	Front wheel	2	
22	C6100-LA17-0000	Stamping bearings	8	
23	63010-LA17-03RP	Duck assembly	1	
24	B6182-0600-000F	Hexagon nuts with non-metallic insert	2	
25	67006-LA17-00B5	Height adjuster link bar	1	
26	72161-LA17-0000	Height adjuster pullback spring	1	
27	51311-LA17-04RP	Wheel cover	2	
28	51380-LA17-01B5	Cable sheath	1	
29	51160-LA17-02B5	Handle Support	1	
30	B5789-08LG-030F	Hexagon flange bolts	3	
31	B93-080G-000F	Spring washer	3	
32	B96. 2-080G-010F	Flat washer	3	
33	10000-V61F-B008	Engine	1	
34	51206-LA17-02B5	Carcher bag cover	1	
35	51312-LA17-00B5	Lower handle mulching wedge	2	
36	55012-LA17-00B5	Bolt isolation pad	4	
37	44009-LA17-02RP		4	
38	12020-LA17-0100	Different bolt	4	

39	44210-LA17-01B5	Lower handle	1	
40	11013-LA17-00B5	Cable clip	1	
41	55012-LA17-03B5	Insulating Spacer	2	
42	53230-LA17-0800	Brake and drive Cable Assembly	1	
43	B923-06KC-000F	Acorn nut	3	
44	12020-LA17-0200	Different bolt	1	
45	53235-LA17-02B5	Blade Control Bar	1	
46	55012-LA17-02B5	Clip	2	
47	12020-LA17-0600	Line retaining bolt	2	
48	44210-LA17-02B5	Uper handle	1	
49	53235-LA17-01B5	Self-propelled control bar	1	
50	51306-LA20-00RP	Rubber on the handle	1	
51	B6177. 1-06KG-000F	Reel nut	1	
52	44325-LA20-0000	Recoil Starter Grip	1	
53	51301-LA17-0000	Rear deflector rod	1	
54	66015-LA17-0000	Cover board torsion spring	1	
55	B896-0005-000F	Lock washers for shafts	4	
56	51160-LA17-01B5	Handle Support	1	
57	B6183-0800-000F	Hexagon flange nuts with non-metallic insert	6	
58	B801-08LG-018F	Half round head square neck bolts	4	
59	72101-LA17-0000	Drive gear	1	
60	51301-LA17-06B5	Front wheel axis assembly	1	
61	B845-ST63-020C	Cross recessed pan head tapping screws	8	
62	51380-LA17-03B5	Rear seat	2	
63	51380-LA17-02B5	Nylon rear axle sleeve	2	
64	51206-LA17-04B5	Catcher box upper cover	1	
65	51213-LA17-01B5	Catcher box bracket	1	
66	75001-LA17-00RP	Height adjuster handle	1	
67	B818-06KC-010F	Cross recess pan head screw	1	
68	67005-LA17-0000	Height adjuster lever	1	
69	66015-LA17-0100	Height adjuster torsion spring	1	
70	51312-LA17-01B5	Mulching wedge	1	
71	66010-LA17-04B5	Fabric bag	1	
72	51310-LA17-09B5	Front wheel	2	
73	55005-LA17-01B5	Wheel dust cap	2	
74	B7246-130G-000F	Corrugated spring washer	4	
75	B275-R8ZZ-0000	Deep groove ball bearing	2	
76	B894. 1-0012-000F	Lock washers for shafts	4	
77	72101-LA17-0100	Drive gear	1	
78	11014-LA17-0000	Drive gear pin	2	
79	72161-LA17-0100	Gear box tension spring	1	

80	C6010-LA17-0200	Gear box	1	
81	B845-ST50-016C	Cross recessed pan head tapping screws	14	