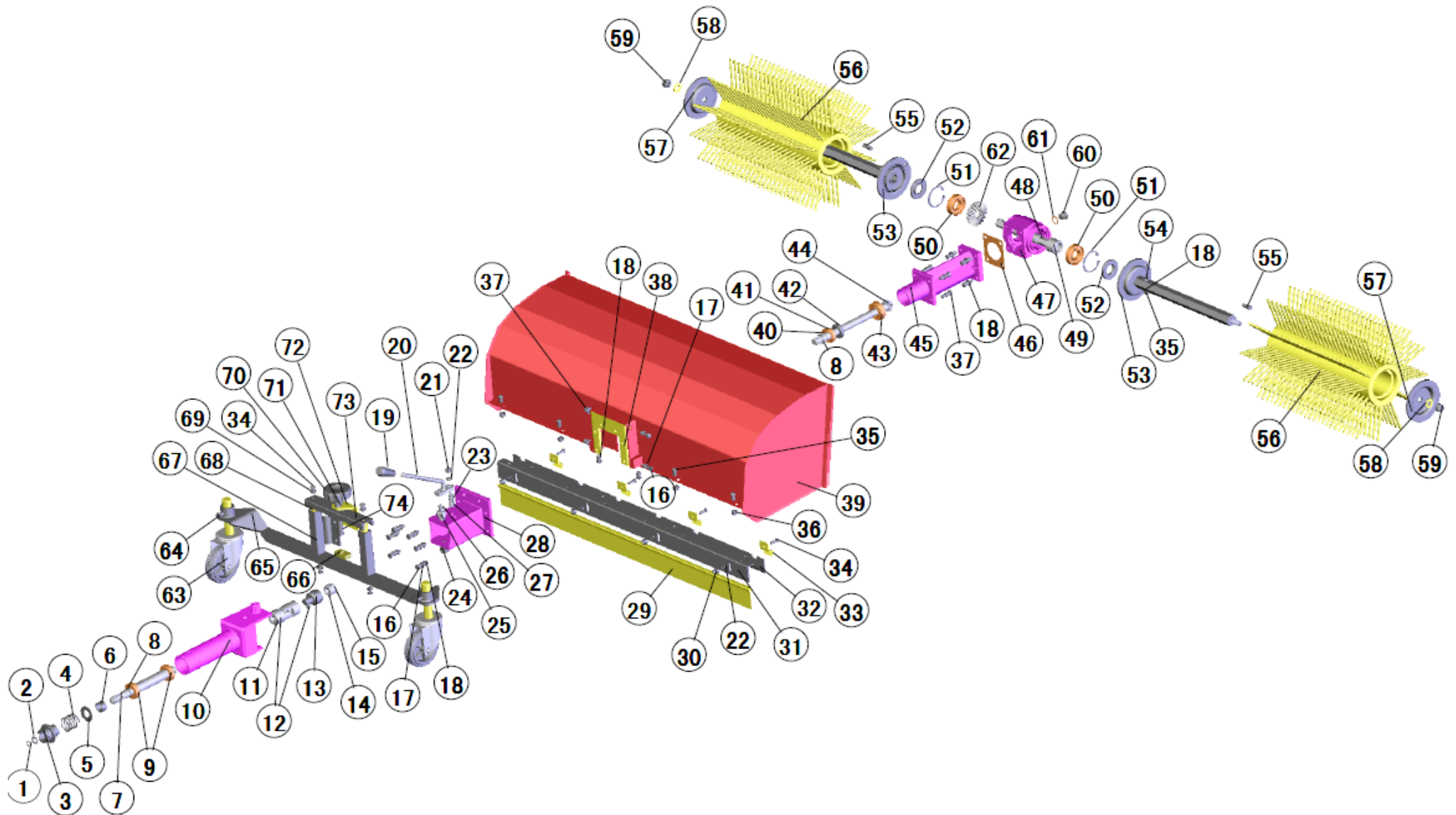


# Explozie piese de schimb BTA-SW360 Dispozitiv pentru maturat



# Explozie piese de schimb

## BTA-SW360 Dispozitiv pentru maturat



No.	Drawing NO.	Parts NO.	Parts name in English	Spec.	Qty
\$1,00	GB/T894.1-1986	G09009	washer on shaft	φ 12	1
\$2,00	DGN360ST.00-10	201105007	washer	65Mn	1
\$3,00	DGN360Z.05-33	201109001	connetor	20CrMnTi	1
\$4,00	SDJ-05-00-08	201105012	spring		1
\$5,00	SDJ-05-00-06	201105010	washer	45#	1
\$6,00	SDJ-05-00-05	201105011	seat pad	45#	1
\$7,00	SDJ-05-00-02	201109002	spline shaft	20CrMnTi	1
\$8,00	GB/T894.1-1986	G09014	washer on shaft	φ 20	2
\$9,00	GB/T276-1994	G08006	bearing	φ 42x φ 20x12	2
\$10,00	SDJ-05-02	201109003	round bush B	45#	1
\$11,00	SDJ-05-00-01	201109004	universal coupling	WSD5	1
\$12,00	GB/TT879-1986	G11005	round pin	φ 6x36	2
\$13,00	SDJ-05-0-03	201109005	connect bush	45#	1
\$14,00	GB/TT879-1986	G11002	round pin	φ 4x35	1
\$15,00	SDJ-05-00-04	201109006	spline housing	45#	1
\$16,00	GB/T5780-1986	G01045	bolt	M8x30	8
\$17,00	GB/T93-1987	G03002	spring washer	φ 8	18
\$18,00	GB/T95-1985	G02003	flat washer	φ 8	14
\$19,00	DGN360Z.06-01	201109007	handle cover	PA6-GF30	1
\$20,00	SDJ-05-03	201109008	ripping bar	45#	1
\$21,00	GB/T6183-1986	G04017	nut	M6	1
\$22,00	GB/T95-1985	G02008	flat washer	φ 6	5

# Explozie piese de schimb

## BTA-SW360 Dispozitiv pentru maturat



\$23,00	SDJ-05-00-13	201109009	pin	45#	1
\$24,00	SDJ-05-00-10	201109010	hexagonal screw B	45#	1
\$25,00	SDJ-05-00-09	201109011	hexagonal screw A	45#	1
\$26,00	GB/T879-1986	G11001	pin	φ 4x20	1
\$27,00	SDJ-05-00-14	201109012	spring		1
\$28,00	SDJ-05-01	201109013	fixed joint plate	45#	1
\$29,00	SDJ-06-01-01	201109014	flat hairbrush		1
\$30,00	GB/T1337-1988	G04006	nut	M6	4
\$31,00	SDJ-06-01-03	201109015	fixed bend slice	45#	1
\$32,00	SDJ-06-01-02	201109016	fixed flat slice	45#	1
\$33,00	SDJ-06-01-04	201109017	clamp piece	45#	4
\$34,00	GB/T2672-1986	G01017	screw	M6x20	4
\$35,00	GB/T2672-1986	G01019	screw	M8x16	10
\$36,00	GB/T1337-1988	G04005	nut	M8	6
\$37,00	GB/T5780-1986	G01004	bolt	M8x25	10
\$38,00	SDJ-04-00-07	201109018	fixed block	45#	1
\$39,00	SDJ-04-00	201109019	housing assy		1
\$40,00	SDJ-02-0-06	201109020	spacer shim A	65Mn	4
\$41,00	GB/T276-1994	G08026	bearing	φ 37x φ 20x9	1
\$42,00	GB/T9877.1-1988	G05023	FB Seal plate	φ 35x φ 20x7	1
\$43,00	GB/T276-1994	G08038	bearing	φ 47x φ 20x14	1
\$44,00	SDJ-02-00-01	201109021	helical gear shaft	20CrMnTi	1
\$45,00	SDJ.02-00	201109022	helical gear bearing base	QT450-10	1
\$46,00	SDJ01-00-05	201109023	oil seal paper		1
\$47,00	SDJ-01-00-01	201109024	gearbox	ZL107	1
\$48,00	SDJ-01-00-02	201109025	bevel gear shaft	20CrMnTi	1
\$49,00	SDJ-01-00-04	201109026	combine	45#	1

# Explozie piese de schimb

## BTA-SW360 Dispozitiv pentru maturat



\$50,00	GB/T276-1994	G08023	bearing	φ 52x φ 25x15	2
\$51,00	GB/T893.1-1986	G10009	hole Spring Collar	φ 52	2
\$52,00	GB/T9877.1-1988	G05017	FB Seal plate	φ 52x φ 25x7	2
\$53,00	SDJ-01-02	201109027	hexagon bar iron		2
\$54,00	GB/T5780-1986	G01003	bolt	M8x40	2
\$55,00	SDJ-01-01-02	201109028	pin	45#	2
\$56,00	SDJ-01-01	201109029	rattler hairbrush		2
\$57,00	SDJ-01-02-02	201109030	corona A	45#	2
\$58,00	GB/T95-1985	G02001	flat washer	φ 12	2
\$59,00	GB/T1337-1988	G04016	nut	M12	2
\$60,00	XZJ.01-12	201102021	filler opening screw	M16x1.5x12	1
\$61,00		201102022	rubber washer	φ 23x φ 16.2x3	1
\$62,00	SDJ-01-00-03	201109031	bevel gear	20CrMnTi	1
\$63,00	SDJ-03-00-01	201109032	truckle assy		2
\$64,00	GB/T5780-1986	G01005	bolt	M8x20	2
\$65,00	SDJ-03-00	201109033	truckle support		1
\$66,00	SDJ-03-00-07	201109034	seat pad	45#	1
\$67,00	SDJ-03-01	201109035	square iron		2
\$68,00	SDJ-03-00-05	201109036	bracing piece	45#	2
\$69,00	GB/T955-1987	G03012	spring washer	φ 8	4
\$70,00	SDJ-03-00-09	201109037	hand wheel	PA6-GF30	1
\$71,00	GB/T6170-1986	G04009	nut	M12	1
\$72,00	SDJ-03-00-06	201109038	angle iron	45#	1
\$73,00	SDJ-03-02	201109039	support plate		1
\$74,00	SDJ-03-04	201109040	screw rod	45#	1